

Gilberdyke Primary School

Newsletter

Friday 1st March '24



Class Photos on Monday 4th March

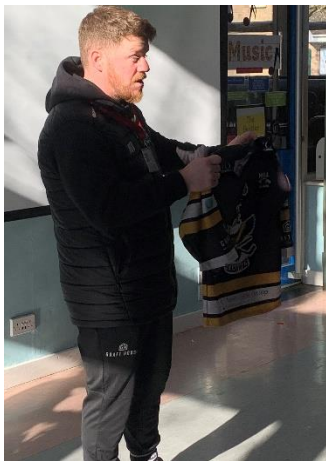
Dear Families,

We have welcomed a wide range of visitors in to school over the last term who have inspired our learning further in subjects like PE and sport as well as Religion & World Views 😊.



Rev. Joseph – Gilberdyke Methodist Church. Rev. Joseph led a workshop for year 5 & 6 who are currently studying Christianity. as well as a whole school assembly.

After school, he very kindly offered to DJ the disco for year one, two and three pupils who had a great time. Thank you for your generosity Rev. Joseph.



Ice Hockey Players Matt & Owen from Hull Reckitt Seahawks came to introduce us to ice hockey. They encouraged us to come and watch the team and spoke about the sense of belonging and enjoyment they gain from being involved.

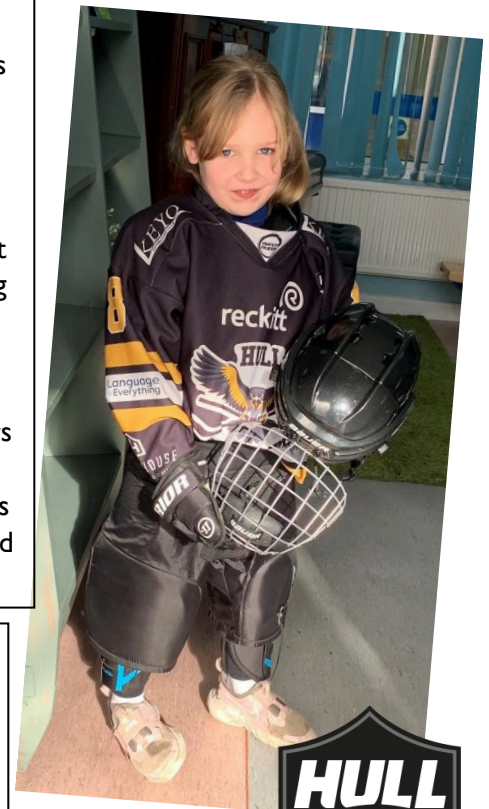
This has inspired years 5 & 6 before they start learning the skills and knowledge around hockey this term.



Professional Golfer Ollie Cross from Brough Golf Club came to inspire us just before we embarked on learning the sport in years one to four this half term.

He encouraged pupils to come and have a go at the sport, reminding us that golf is for people of all ages, not just older. Ollie talked about the impact of golf on his life and how it led him into a career.

In addition, he was able to talk proudly about his role in coaching one of our ex-pupils who went on to represent England and now has a scholarship in America 😊.



Mother's Day in Foundation Stage



Mother's Day is a special time for any person that we view in a mothering role – it can be a mum or an auntie, a grandma or a dad who has key responsibility for providing love, care and support.



This year, we are hosting a Mother Day breakfast and stay and read session on Friday 8th March at 8:45. Parents can stay and read a book with their child and breakfast will be provided. Dads are welcome to attend the event too – it's all about *caring and sharing*.

Following this, the children in foundation stage will showcase the dance routine they have spent the last term learning as part of their work in PE for you to enjoy.

Year Six News

Our year 6 residential was another milestone success in the final part of the journey for these young people here at Gilberdyke Primary.

We laughed, sang, danced a lot and cried a little – as usually happens - but we did it together and the strong bonds of this year group shone very brightly.

The best bit about residential is spending quality time away from school, having the time to talk with the children at length, reflecting on how they used to be when they were younger and how much they have progressed in every way possible but especially in their character.

They represented themselves, their families and our school exceptionally well 😊.

Another milestone that happened just in time for residential was the arrival of their leavers' hoodies. There was a unique twist this year as you'll see in the photograph – we had a lot of debate about whether they wanted the old or new logo on them and each child made an individual decision in the end based on their personal preference.



Health & Safety Reminder

Sweets in Packed Lunches:



It is the duty of all schools and educational establishments to promote key guidance and messages published by the NHS.

Their guidance around nutrition for young children is based on a balanced diet where foods from different groups are eaten in proportion. Sweets are a treat and as such, should be enjoyed occasionally.

For two reasons, *please do not send sweets in your child's packed lunch*:

- Health guidance as supported by the NHS
- The choking hazard they can often present if not chewed properly

We have spoken to the children about this and they understand the need for this guidance around not having sweets in school. They asked us to clarify what we mean by sweets. These include things like Haribo jelly sweets, lollipops, popping candy etc.

The pupils also asked whether this included chocolate and we clarified that, as part of a balanced diet, a chocolate biscuit meets the NHS criteria as a sweet treat suitable for a packed lunch.

Many thanks for your support in this matter.

PTFA News

- Valentine Disco fundraising

The Valentine's Disco we held recently raised £251.61 – many thanks for everyone's support and for Revd. Joseph for kindly offering to be DJ for the Y1, 2 and 3 event which helped the profits to remain high.

- Easy Fundraising

If you shop online using the Easy fundraising app/website, the school benefits from a small proportion of funding with every purchase you make.

It's easy to do and pretty effortless on the part of the shopper. We have recently received monetary donation of £29.64 into our bank account as a result of people who use the app/facility already but this could be a lot higher.

If you can start to support school in this way that would be hugely appreciated. Just scan the attached QR code.

Many thanks for your support in advance.

- Family Bingo Event

We will be hosting a family bingo night at the start of the Easter holidays at The White Horse pub and would love you to join us.

The event will be held on Sunday 24th March and more details will follow.



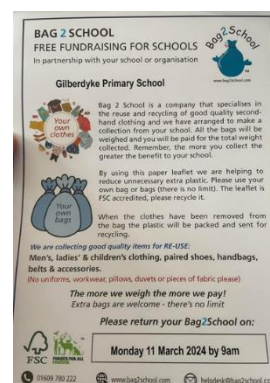
- Bags 2 School fundraising

A rolled-up bag was sent home with every pupil on Friday 23rd February with instructions attached regarding the collection of unwanted clothes that you can donate to school.

We can bulk the donations together and get paid for the total weight collected – an easy fundraising solution which supports families to recycle old clothes.



Please return any bags of unwanted clothes to school as soon as you have gathered the items. Many thanks in advance.



- **Ink Cartridge Recycling**

In partnership with Printer Cartridge Recycling Ltd, we have a scheme to turn your empty small inkjet cartridges, mobile phones, and surplus unused cartridges into valuable funds to help our charity / school.

All the proceeds will go to us and we would be very grateful for any donations. The mobile phones can be in any condition so if you have any lying around or tucked in a drawer, why not free up some space and drop them off with us?



Where to drop off

Please take to school and leave at the office

Next Meeting...

- This will be held on Saturday 16th March at 1.30pm at The White Horse pub.

More Information can be found on our social media platforms:

Facebook Page: Gilberdyke Primary School PTFA

Twitter Page: @PTFA_Gilberdyke

Email address: gilberdykeprimarypta@gmail.com

Take care,

Melissa Shirley